



Installer Manual

Installer

Version 2.60Ea Feb. 2008

Notes

- (1) Reproduction of any part of this documentation by any means is prohibited.
- (2) The contents of this documentation are subject to change without notice.
- (3) Comments and notification of any mistakes in this documentation are gratefully accepted.
- (4) This software cannot be used with other equipment that the specified.
- (5) EPSON will not be responsible for any consequences resulting from the use of any information in this documentation.

Trademarks

Microsoft®, Windows®, Windows Vista™, Visual Basic® and Visual C++® are trademarks or registered trademarks of Microsoft Corporation in the United States and/or other countries.

EPSON® and ESC/POS® are registered trademarks of SEIKO EPSON CORPORATION. Other product and company names used herein are for identification purposes only and may be trademarks or registered trademarks of their respective companies.

Contents

SECTION 1. DEVELOPMENT OUTLINE	1
1.1 FEATURES	1
1.2 OPERATING ENVIRONMENT	1
1.3 NECESSARY SYSTEM COMPONENTS.....	2
SECTION 2. INSTALLATION	3
2.1 FEATURES OF THE INSTALLER	3
2.2 INSTALLATION	3
2.2.1 <i>First Installation</i>	4
2.2.2 <i>Overwriting Installation</i>	10
2.3 FILES TO BE INSTALLED	14
2.4 SILENT INSTALLATION.....	14
2.5 MESSAGES FOR INSTALLATION	15
2.6 PRECAUTIONS FOR INSTALLATION.....	16
SECTION 3. UNINSTALLATION	17
3.1 UNINSTALLATION PROCEDURES	18
3.2 SILENT UNINSTALLATION.....	18
3.3 MESSAGES FOR UNINSTALLATION.....	19
3.4 PRECAUTIONS FOR UNINSTALLATION.....	19
SECTION 4. EPSON TM USB DRIVER	20
4.1 INSTALLATION OF THE EPSON TM USB DRIVER	20
4.1.1 <i>Windows 2000</i>	20
4.1.2 <i>Windows XP</i>	20
4.1.3 <i>Windows Vista</i>	21
4.1.4 <i>Precautions</i>	21
4.2 UPDATING AN OLD VERSION OF THE USB DEVICE DRIVER.....	22
4.2.1 <i>Windows 2000</i>	22
4.3 NAMING DEVICES.....	22
4.3.1 <i>Device Names in the Registry</i>	22
4.4 PORT NAMES.....	23

Section 1. Development Outline

This section describes development outline for the EPSON TMFLogo Utility Ver.2.60Ea.

1.1 Features

This program installs the files that uses for the EPSON TMFLogo Utility Ver.2.60Ea in a directory specified. And makes the EPSON TMFLogo Utility Ver.2.60Ea operational.

1.2 Operating Environment

The EPSON TMFLogo Utility Ver.2.60Ea operates under the following environment.

- Computer Hardware
 - IBM PC/AT or compatible
- Operating Systems
 - Windows 2000
 - Windows XP
 - Windows Vista
 - * For the details of each operation system version, refer to the ReadMe.txt.
 - * There are unsupported devices in Windows Vista environment.
 - For details of contents, please refer to the ReadMe.txt.
- Accessible Serial Ports
 - COM1, COM2, COM3, and COM4 (extended port functions allow use of COM5 though COM10)
- Accessible Parallel Ports
 - LPT1, LPT2, and LPT3 (operation is unverified in LPT3)
- Accessible USB ports
 - USB equipment must be connected to the IBM PC/AT compatible machines that are equipped with USB connectors or use USB expansion cards (however, the operating system must be the English version of Windows 2000, Windows XP or Windows Vista when USB is used.)
 - If the USB device cannot be identified when an IBM PC/AT compatible machine equipped with a USB connector is in use (especially for machines

put on the market prior to the English version of Windows 98 being available), contact the manufacturer.

- Accessible Network

Ethernet and IEEE802.11b support applies to TCP/IP compliant networks. The setup of a compliant network should be handled by a qualified network administrator.

- Accessible Devices

For details of support devices, please read the ReadMe.txt.

1.3 Necessary System Components

The following hardware and software are necessary.

- Computer Body Parts

IBM PC/AT Interchange Machine

- Operating System

Windows 2000

Windows XP

Windows Vista

- Hard Disk, Memory

At least 10M bytes hard disk capacity is needed except for recommended blank capacity of using OS (Windows 2000, Windows XP and Windows Vista).

- Package content

This package includes software and manual for the EPSON TMFLogo Utility Ver.2.60Ea.

Manuals:

“TMFLogo Utility”

Information on the EPSON TMFLogo Utility function.

“Installer”

This one. Information on the EPSON TMFLogo Utility Ver.2.60Ea installation.

Section 2. Installation

Running the EPSON TMFLogo Utility Ver.2.60Ea Installer program can perform all the processing required for installation of the EPSON TMFLogo Utility Ver.2.60Ea. To ensure optimal use of the EPSON TMFLogo Utility Ver.2.60Ea, various functions are offered during installation. Please read this manual for details.

When installing or reinstalling, first ensure that all running application programs are closed any other applications.

The EPSON TMFLogo Utility Ver.2.60Ea install program is explained in the following.

2.1 Features of the Installer

This Installer is created using InstallShield 12.

The Installer performs the following operations:

- Specifies the destination directory for installation
- Specifies the destination folder for installation
- Installation of the manual
- Installation of the driver of EPSON TM USB
- Installation of the driver of parallel
- Uninstallation

The EPSON TMFLogo Ver.2.60Ea can be installed though the other driver has been already installed.

2.2 Installation

The procedure of install is as follows:

When Windows 2000, Windows XP or Windows Vista is used, installation can be done only by authorized users for the PC to be installed. Please request the authorized users for help.

Installation of the EPSON TM USB Driver is required when the USB devices are to be used.

Without the installation in advance, the devices used with USB port cannot be registered normally.

For details of EPSON TM USB Driver, please refer to the "Section 4. EPSON TM USB Driver" of this manual.

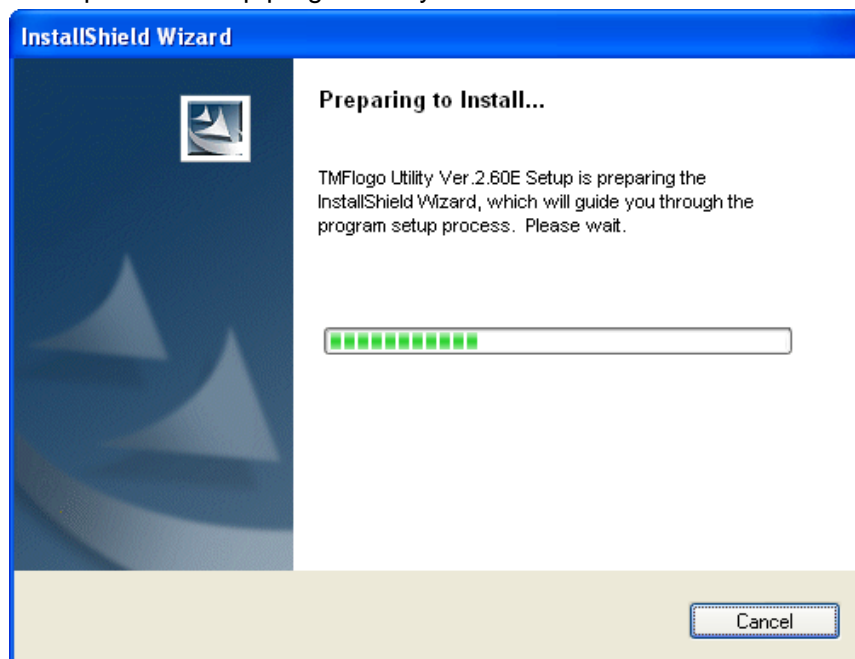
2.2.1 First Installation

Without the installation of the TMFLogo Utility Ver.2.60Ea in advance, install according to the following procedure.

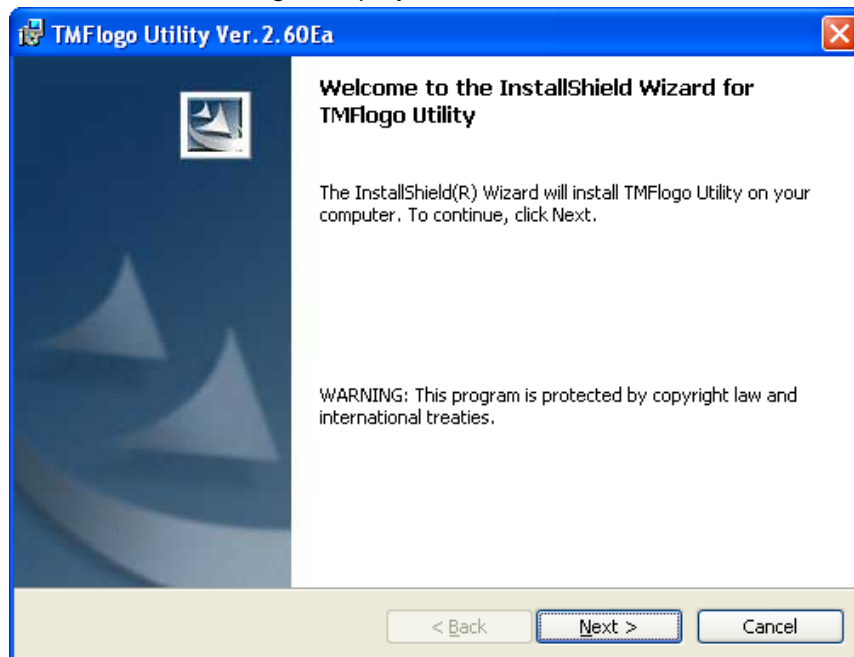
<Installation Procedure>

- (1) Run the TMFLOGO260Ea.exe program.

If Setup is executed while other program is running, its operation is not guaranteed. It is suggested to close all programs before executing Setup. Startup of the Setup program may take some time.

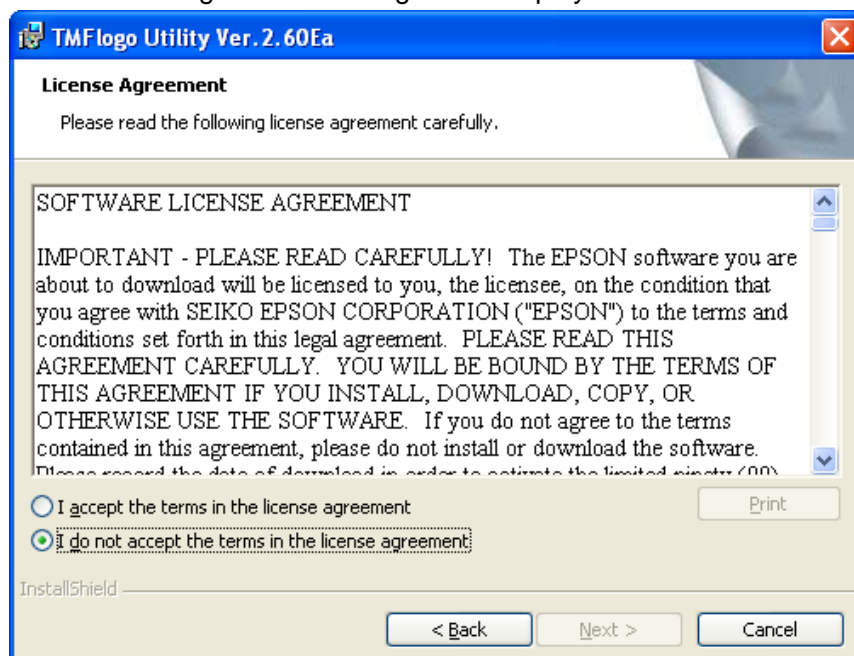


- (2) The “Welcome” dialog is displayed.



Read the contents and then selects the [Next] button if agreed with the contents. Select the [Cancel] button for quitting.

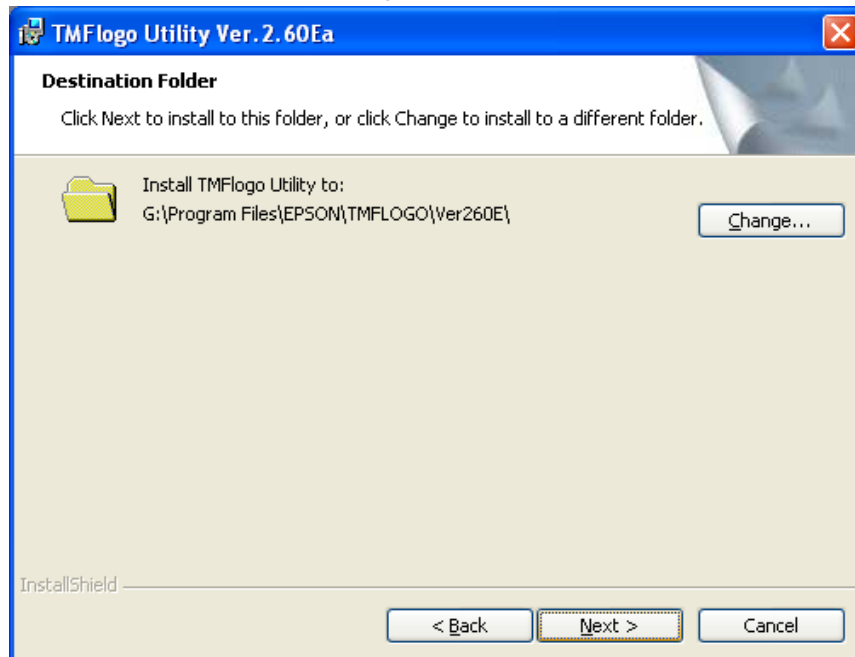
- (3) The “License Agreement” dialog box is displayed.



To install the TMFLogo Utility Ver.2.60Ea, the user must agree to the contents of the displayed agreement. Read the contents. Select “I accept

the terms in the license agreement” if agreed with the Software License Agreement. After the selection, the [Next] button becomes effective. Select the [Next] button. If the Software License Agreement is not acceptable, select “I do not accept the terms in the license agreement”. Then, select the [Cancel] button. Exits installation. Select the [Back] button for returning to the previous dialog box.

- (4) The “Destination Folder” dialog box is displayed.



Selects the installation directory.

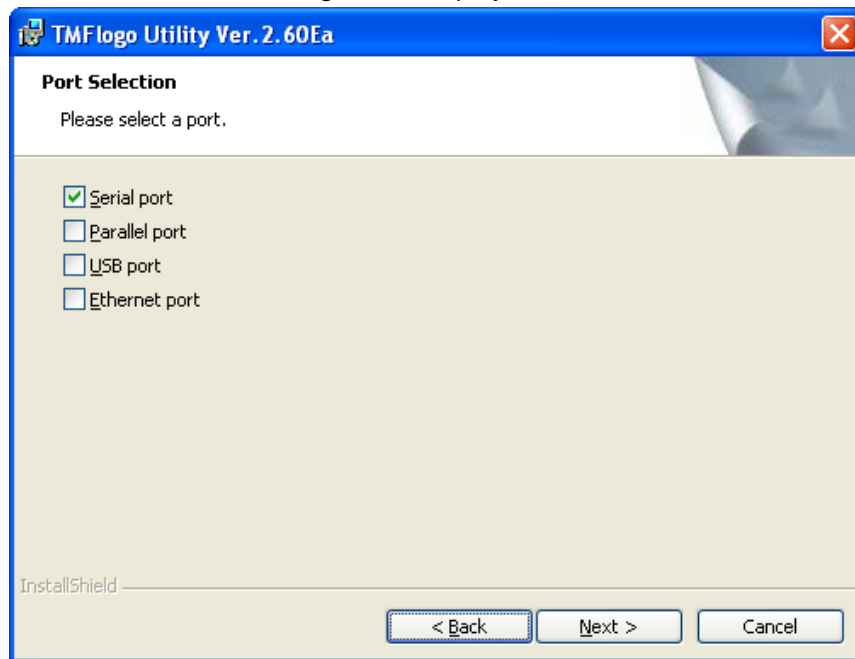
When the directory requires no change, select the [Next] button.

When the directory requires change, select the [Change...] button. Then, specifies the destination directory for installation.

Select the [Back] button to return to the previous dialog box.

Select the [Cancel] button for quitting.

(5) The “Port Selection” dialog box is displayed.



Select the port.

When the Parallel port was selected, the Lilac parallel driver is installed.

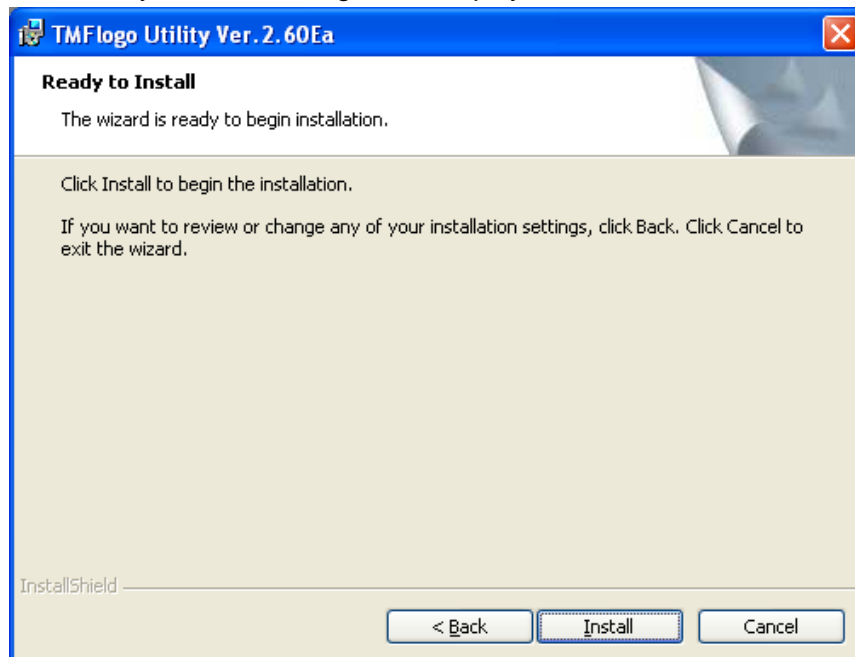
When the USB port was selected, the TMUSB driver is installed.

To go to the next dialog box, select the [Next] button.

Select the [Back] button to return to the previous dialog box.

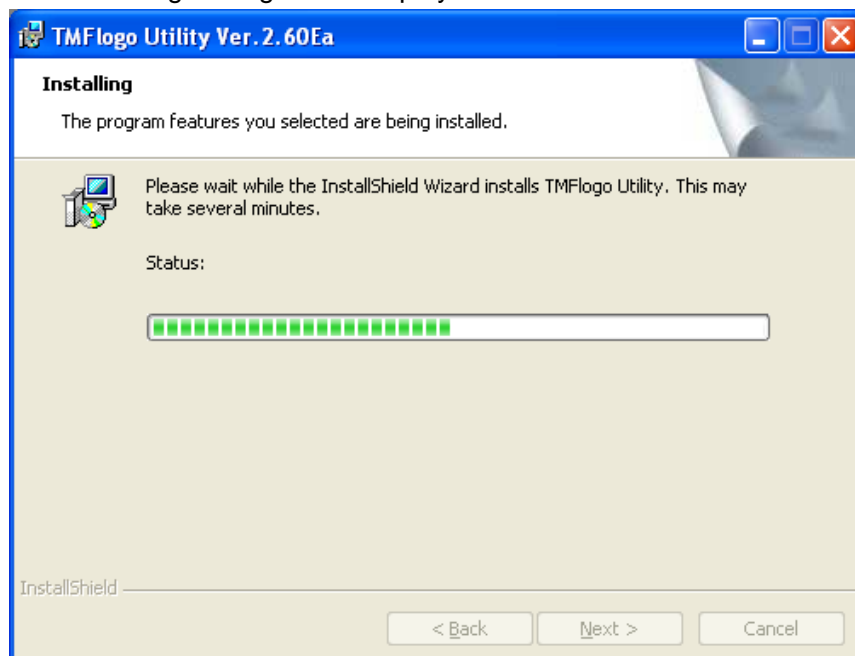
Select the [Cancel] button for quitting.

- (6) The “Ready to Install” dialog box is displayed.



When you want to start the installation process, select the [Install] button.
Select the [Back] button for return to the previous dialog box.
Select the [Cancel] button for quitting.

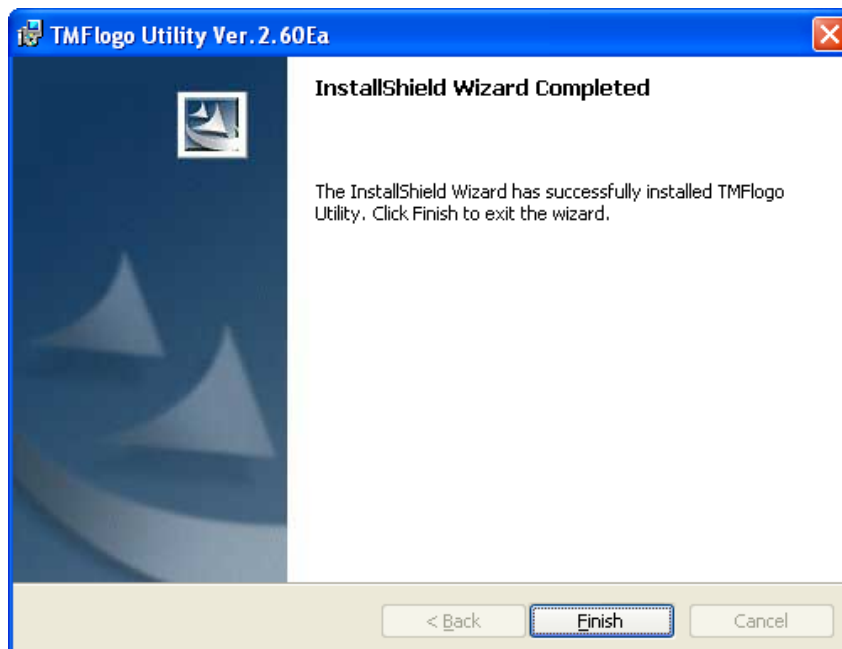
- (7) The “Installing” dialog box is displayed.



The progress is shown on the status bar.

At this point, all the information necessary for the version upgrade shall be updated. It may take a few minutes for all the operations to be completed.

- (8) When all the operations are completed, the “Setup Complete” dialog box is displayed.



Installation is completed. Select the [Finish] button.

- (9) If system files are renewed because of the installation, rebooting of system may be requested. In this case, please specify whether rebooting right away or later, and execute the rebooting.
If later rebooting is specified, make sure to reboot after the completion of the installation. The operation under the un-rebooted environment is not guaranteed at all.

2.2.2 Overwriting Installation

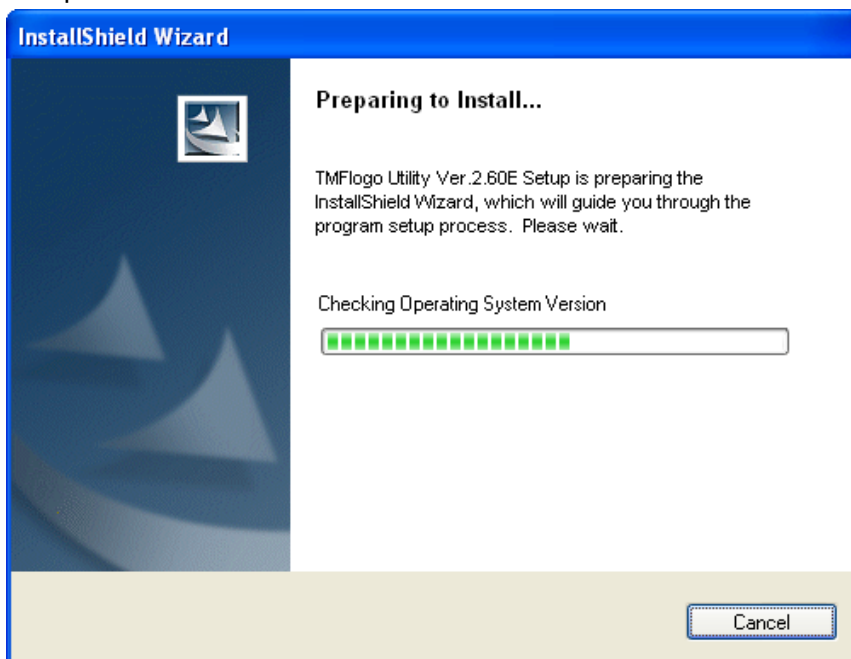
With the installation of EPSON TMFLogo Utility in advance, install according to the following procedure.

2.2.2.1 Overwriting TMFLogo Utility Ver.2.60Ea by TMFLogo Utility Ver.2.60Ea

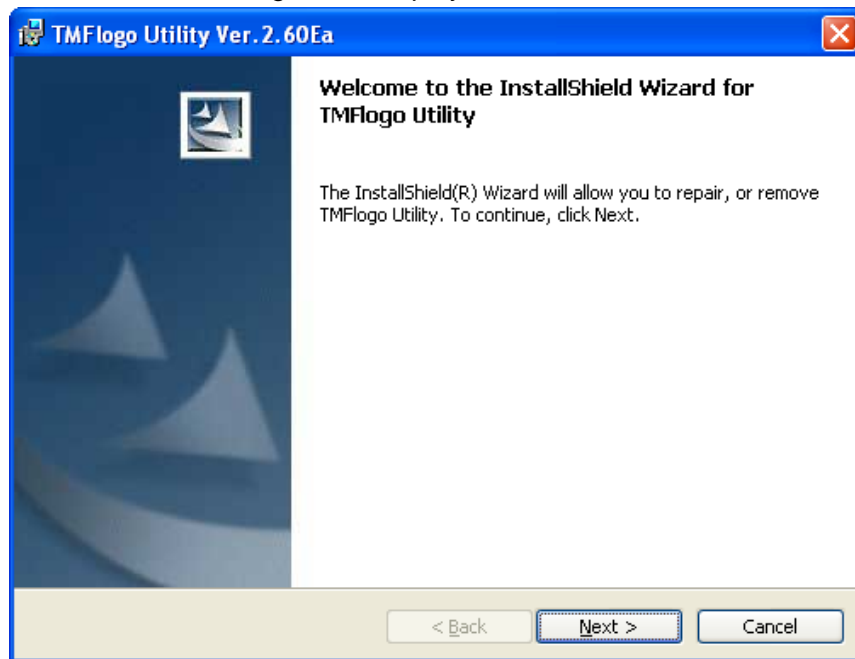
When performing an overwrite installation, user information, specified installation destination, and specified program folder in the previous installation will remain effective. This information cannot be changed. If a version of EPSON TMFLogo Utility Ver.2.60Ea has been already installed, when you try to install the same version, Add-in Installation starts. In this case, only the installed devices and files are overwritten.

<Installation Procedure>

- (1) Run the TMFLOGO260Ea.exe program on disk 1.
Before running the TMFLOGO260Ea.exe, close the other programs already running. Otherwise, installation may fail. It takes some time for Setup to start. Wait a while.

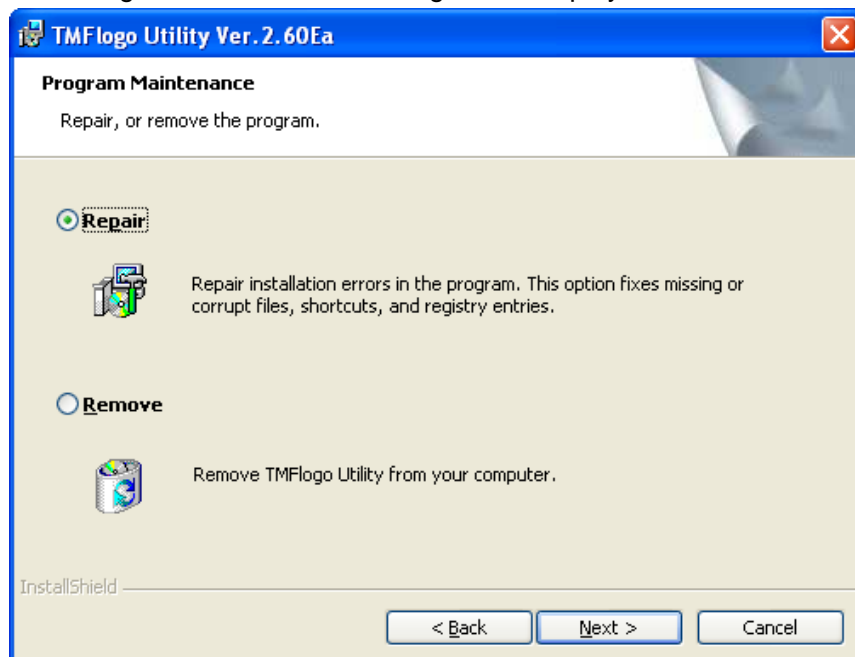


- (2) The “Welcome” dialog box is displayed.



To go to the next dialog box, select the [Next] button.
Select the [Cancel] button for quitting.

- (3) The “Program Maintenance” dialog box is displayed.



Select the arbitrary option and then select the [Next] button.
After this procedure is different depending on the select option.

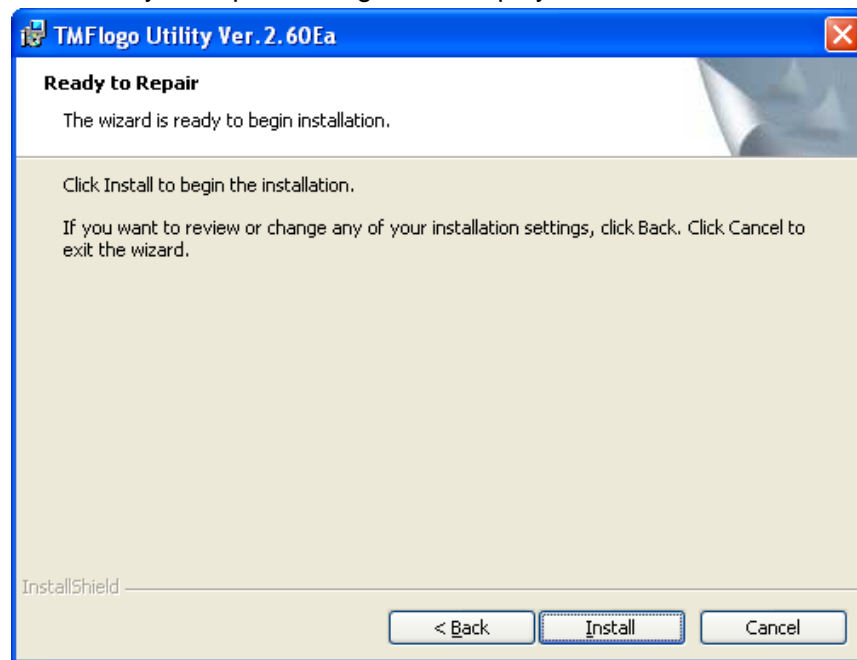
When the "Repair" has been selected, the "Ready to Repair" dialog box is displayed.

When the "Remove" has been selected, the confirmation message to removing is displayed. When the "Remove" has been selected, the uninstaller gets started.

Select the [Back] button to return to the previous dialog box.

Select the [Cancel] button for quitting.

- (4) The "Ready to Repair" dialog box is displayed.

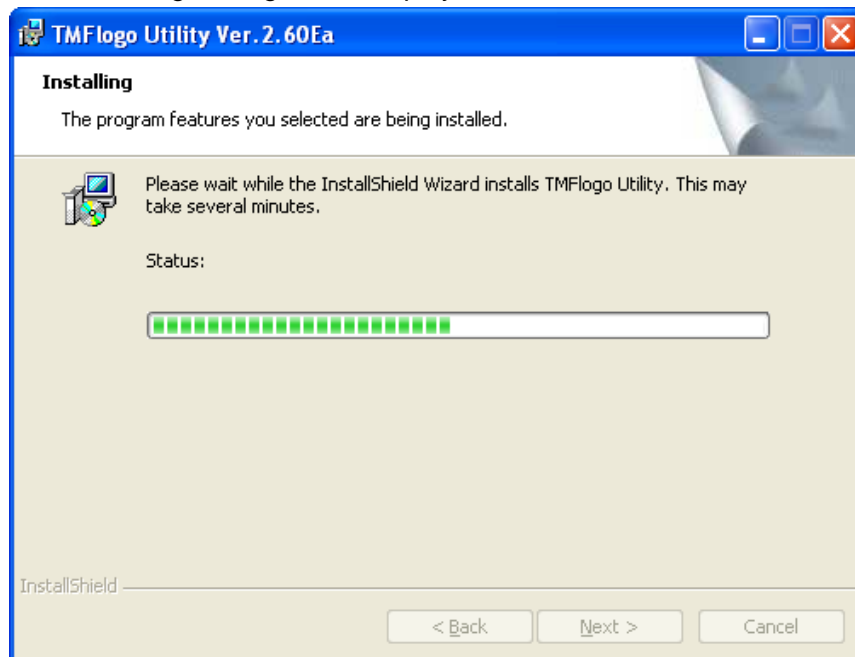


When you want to start the installation process, select the [Install] button.

Select the [Back] button for return to the previous dialog box.

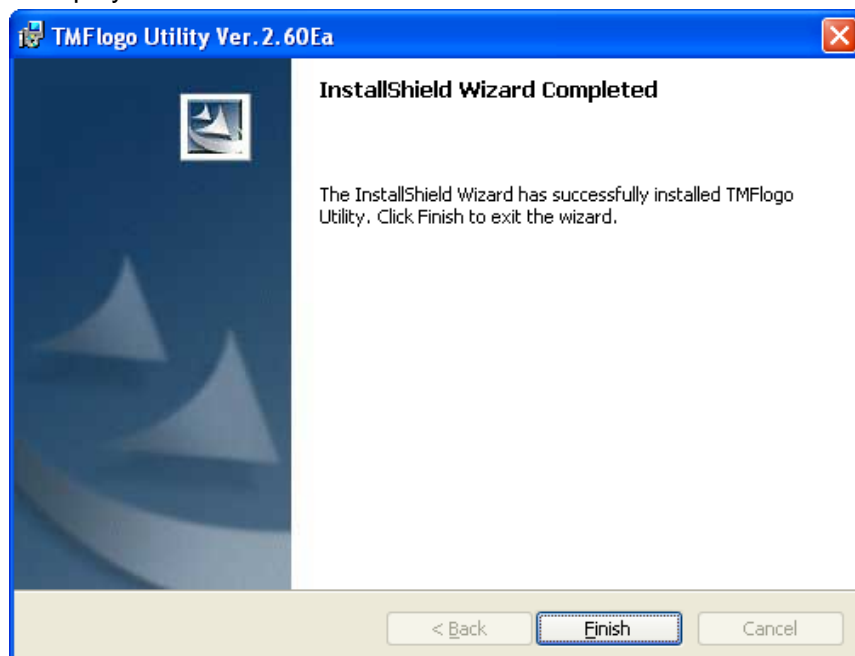
Select the [Cancel] button for quitting.

- (5) The “Installing” dialog box is displayed.



The progress is shown on the status bar. It may take a few minutes for all the operations to be completed.

- (6) When all the operations are completed, the “Setup Complete” dialog box is displayed.



Installation is completed. Select the [Finish] button.

- (7) If system files are renewed because of the installation, rebooting of system may be requested. In this case, please specify whether rebooting right away or later, and execute the rebooting. If later rebooting is specified, make sure to reboot after the completion of the installation. The operation under the un-rebooted environment is not guaranteed at all.

2.2.2.2 Overwriting to the different version

The overwriting to the different version is not supported.

If a version prior to the EPSON TMFLogo Utility Ver.2.60Ea has been already installed, the EPSON TMFLogo Utility Ver.2.60Ea performs installation on the different directory.

2.3 Files to be installed

The following files are installed when the installation is normally completed.

- Program files:
These files are installed in the directory where the EPSON TMFLogo Utility Ver.2.60Ea is installed.
- Manuals:
These files are installed in the Manual folder under the folder where the EPSON TMFLogo Utility Ver.2.60Ea is installed.
- EPSON TM USB Driver Files:
These files are installed in the Tmusb folder under the folder where the EPSON TMFLogo Utility Ver.2.60Ea is installed. The Installer of EPSON TM USB Driver and related files are included in this directory. Folders are made for each OS and files are copied. These files are inevitably installed.
- Parallel Driver Files:
These files are installed in the Lilac folder under the folder where the EPSON TMFLogo Utility Ver.2.60Ea is installed. The installer of parallel driver and related files are included in this directory. Folders are made for each OS and files are copied. These files are inevitably installed.

2.4 Silent Installation

The Silent Installation is not supported.

2.5 Messages for Installation

The program shows a user message when necessary after the execution or setting of an item selected in a dialog box. Follow the instructions in them. Conditions in which messages appear and the messages themselves are listed below.

Condition	Error Message
A user without administrator authority is attempting to perform installation. (Windows 2000/ Windows XP/ Windows Vista)	The user does not have Administrator authority.
When the user is attempting to perform installation to the PC that with unsupported OS.	This Operating System is not supported.
The update transaction of the parallel driver is success.	To use the Parallel interface, the PC must be restarted. To restart now, click "Yes". To restart later, click "No".
There is no driver supporting the OS currently used.	The OS currently used is not supported.
An error is returned during the installation of the parallel driver.	The Installer of the Parallel driver returned an error.
An unexpected error is returned during the installation of the parallel driver.	An unexpected error is detected.
When there was a failure to load an installer internal DLL.	The specified file cannot be found. Please restart installation.

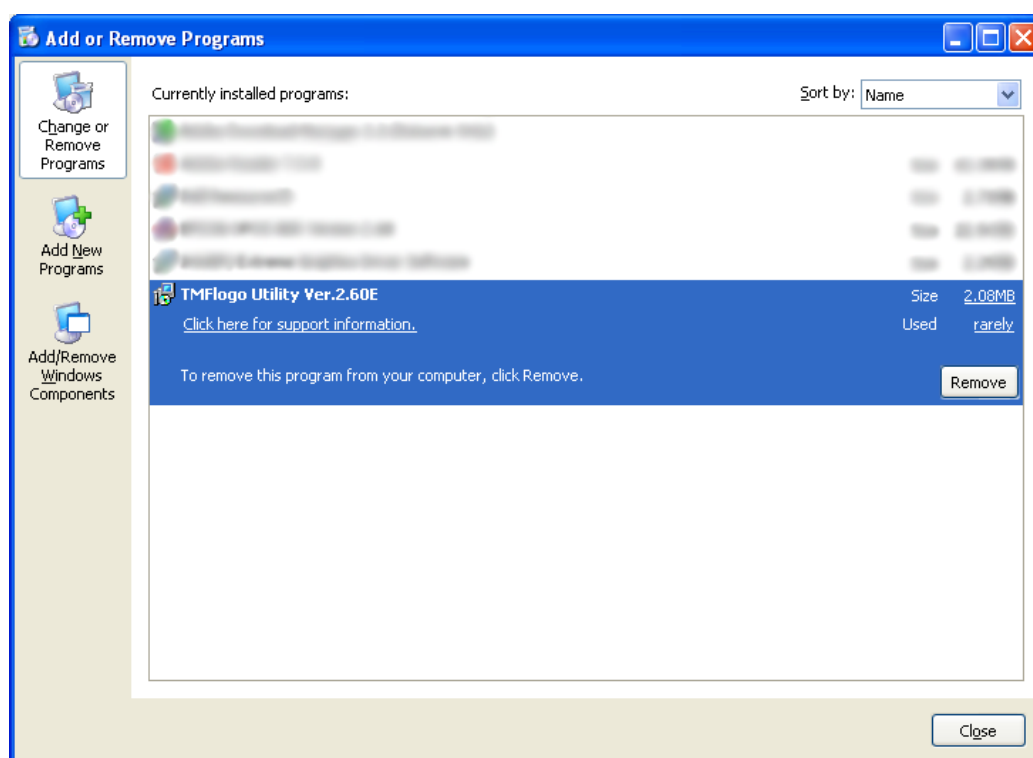
2.6 Precautions for Installation

- If the installation fails for some reason, or it is canceled during the execution, be sure to perform a reinstallation. In the condition where installation has failed or been canceled, the settings, etc. may not be completely removed even if uninstallation is performed. EPSON TMFLogo Utility Ver.2.60Ea may malfunction due to the failure of the first installation even after the reinstallation. It is recommended to uninstall EPSON TMFLogo Utility Ver.2.60Ea and install it again.
- When installation of parallel driver with this installer is succeeded, please make sure to reboot the system. The rebooting enables the use of recommended parallel driver.
Please note that if the system is not rebooted, the operation is not guaranteed at all.
- Upon completion of the installation, a Tmusb folder that stores the installer of EPSON TM USB Driver and a Lilac folder that stores the installer of recommended parallel driver are created at the target folder.
Even if these drivers are not installed with this installer, they can be installed by execution of their installers later on.
- When you select the Destination Folder, do not specify the different language (US version, Japanese version) folder. In this case, operation cannot be guaranteed.

Section 3. Uninstallation

The provided Uninstaller must be used to uninstall an installed EPSON TMFLogo Utility Ver.2.60Ea program. The following methods are available for uninstallation.

Select the [Modify] button of the EPSON TMFLogo Ver.2.60Ea by the "Add or Remove Programs" (in Windows 2000/XP) or the " Programs and Features" (in Windows Vista).



In both cases, the EPSON TMFLogo Utility Ver.2.60Ea uninstaller is executed. When uninstalling, first make sure that all running applications are closed those used by any other applications.

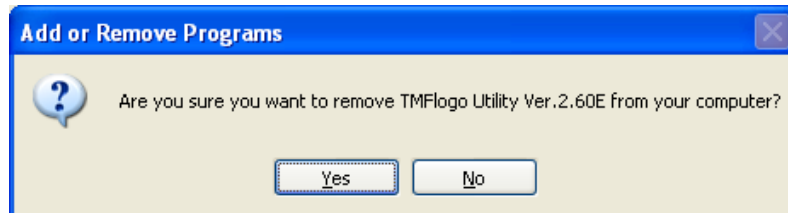
However, when using Windows 2000, Windows XP and Windows Vista, only privileged users can use install programs. Please consult a user who has privilege for the machine.

3.1 Uninstallation Procedures

Perform uninstallation of the EPSON TMFLogo Utility Ver.2.60Ea, using either of the methods prescribed.

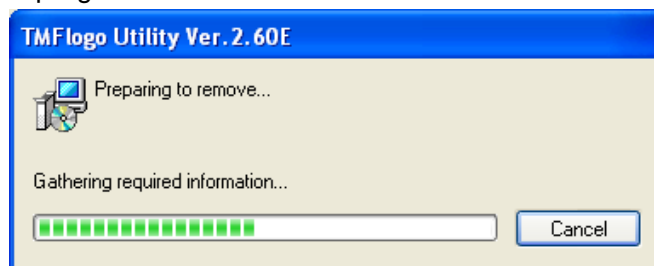
<Uninstallation Procedure>

- (1) The "Information..." dialog box is displayed.



To continue the uninstall operation, select the [Yes] button. To cancel the operation here, select the [No] button.

- (2) A progress bar that indicates the status of the Uninstallation is displayed.



The [Cancel] button works at this point, but do not press the [Cancel] button unless there is a particular reason.

Operation after pressing the [Cancel] button is not guaranteed. If pressed, be sure to perform a reinstallation.

3.2 Silent Uninstallation

The Silent Uninstallation is not supported.

3.3 Messages for Uninstallation

The Uninstaller program does not have user message.

3.4 Precautions for Uninstallation

- The Uninstallation is executed on the condition that TMFLogo Utility related files are not in use. If the TMFLogo Utility related files are in use, a message that files cannot be deleted is displayed. When this message is displayed, close the application that is using the TMFLogo Utility related files. Then try again to continue the Uninstallation process. If the Uninstallation is not retried, files alone will remain in the directory.
- Close Explorer for executing Uninstaller.
- This Uninstaller does not uninstall the EPSON TM USB Driver and the recommended parallel driver that are provided by the installer. However, the system operation is not affected by those drivers.

Section 4. EPSON TM USB Driver

Installation of the EPSON TM USB Driver is required when the USB devices are to be used. The procedure of install is as follows.

4.1 Installation of the EPSON TM USB Driver

The methods for installing the USB driver with Windows 2000, Windows XP or Windows Vista are explained below (note that installation in operating systems other than Windows 2000, Windows XP and Windows Vista are not supported). When Windows 2000, Windows XP or Windows Vista is used, installation can be done only by authorized users of the PC installation. Please request the authorized users for help.

4.1.1 Windows 2000

- (1) The "Add New Hardware" Wizard is displayed when the EPSON UB-U01II/02II is detected.
- (2) Select Search for the best driver for your device (recommended), then click on the [Next] button.
- (3) Select "Specify a location".
- (4) Specify the location in which the driver is located on the hard disk.
- (5) When the driver is found, the conformation screen is displayed.
- (6) After confirming as EPSON UB-U01II/02II, click on the [Next] button. Driver is installed.
- (7) After completed the installation of the driver, click on the [Finish] button to complete the installation.

4.1.2 Windows XP

- (1) The "Found New Hardware" Wizard is displayed when the EPSON UB-U01II/02II is detected.
- (2) Click the [Next] button with Install from a list or specific (Advanced) selected.
- (3) Select Search for the best driver in these locations for Search and installation options. Check Include this location in the search, and specify the location, and then click the [Next] button. (The driver files are copied to the

EPSON TMFLogo Utility destination folder).

- (4) When the driver is found, the “has not passed Windows Logo testing to verify its compatibility with Windows XP” message appears; click the [Continue] button.
- (5) After completed the installation of the driver, click on the [Finish] button to complete the installation.

4.1.3 Windows Vista

- (1) The “Found New Hardware” Wizard is displayed when the EPSON UB-U01II/02II is detected.
- (2) Select “Locate and install driver software (recommended)”, then click on the [Next] button.
- (3) Select “Browse my computer for driver software (advanced)” Check “Include subfolders”, and specify the location, and then click the [Next] button. (The driver files are copied to the EPSON TMFLogo Utility destination folder).
- (4) After completed the installation of the driver, click on the [Finish] button to complete the installation.

4.1.4 Precautions

- When UB-U01II/02II is being used, it is indicated with EPSON UB-U01II/02II.
- Ensure that USB equipment is installed in accordance with USB standards. Certain parts of these standards are listed below. There are several conditions in effect when creating a tree consisting of hubs that can accept multiple connections of USB mice, keyboards and other devices (known as nodes.)
 - A maximum of 127 nodes and hubs can be connected.
 - Only a single tree for USB hosts and route hubs exists.
 - A maximum of six branch levels are possible with the hubs. As this includes the PC route hub, only five will appear to actually exist.
 - The maximum length of the cable connecting hubs with hubs or nodes must be within five meters (under normal conditions.)
- If the following drivers are installed later when the EPSON TMFLogo Utility is being installed, the version of TMUSB driver is affected by those drivers. In such case, please update the TMUSB driver. For details of update ways, please refer to the "4.2 Updating an old version of the USB device driver" of this section.
 - EPSON Advance Printer Driver
 - EPSON TM-J9000/J9100 Driver

- EPSON OPOS ADK for .NET
- EPSON JavaPOS ADK

4.2 Updating an old version of the USB device driver

The method for updating the USB driver with Windows 2000 is explained below. For Windows XP, the images of the windows are different, but the updating procedures are the same as those of Windows 2000.

4.2.1 Windows 2000

- (1) Connect the printer to the computer and click the [Device Manager] in "Hardware" tab on the "System Properties". Select "EPSON USB Controller for TM/BA/EU printers" under "Universal Serial Bus controllers". Click the [Properties] button to open the Properties screen.
- (2) Select the "Driver" tab and click the [Update Driver] button.
- (3) "Update Device Driver" wizard will appear. Click the [Next] button.
- (4) Select "Display a list of the known drivers so that I can choose a specific driver" and click the [Next] button.
- (5) Click [Have Disk...] and specify the location in which the new driver is located on the hard disk. The driver files are copied to a "TMUSB" folder at the EPSON TMFLogo Utility destination folder.
- (6) Click the [Next] button.
- (7) Check that "EPSON USB Controller for TM/BA/EU Printers" is displayed. Click the [Next] button to begin updating the driver.
- (8) After the driver has been updated, click the [Finish] button.
- (9) Check that the version on the Properties "Driver" tab is 1.50.

4.3 Naming Devices

4.3.1 Device Names in the Registry

A "device name" is required for the EPSON TMFLogo Utility and other applications to access devices such as the TM printer. The device name for the USB is automatically added by the setup utility (hereafter SetupPOS) and the TM Flash log setup (hereafter TMFlogo) utility based on the information generated by the USB device driver. This device name is retained in the registry.

The following describes how to name USB devices.

When the port numbers are displayed by SetupPOS and TMFlogo, the device

names are assigned to each of the USB interface ports (hereafter “port”) following reference to the registry information generated by the USB device driver.

These device names are assigned in the order of “TMUSB000”, “TMUSB001”, “TMUSB002”, etc., and assigned according to the following method.

Once a device name has been assigned to a port, the same device name will always be used even if the device is disconnected from the PC and then reconnected again (same when the PC is reset). This is owing to the fact that the device names are managed as the ID numbers of ports. Accordingly, the device name assigned to the ID number of a given port is not assigned to a port having another ID number.

An example is shown below.

Operations when a TM printer has never been connected to the PC.

1. TM printer “A” connected (Port ID number “1”) => TMUSB000
2. TM printer “B” connected (Port ID number “2”) => TMUSB001
3. TM printer “C” connected (Port ID number “3”) => TMUSB002
4. TM printer “A” disconnected (Port ID number “1”)
5. TM printer “A” connected (Port ID number “1”) => TMUSB000
(because TMUSB000 has been assigned to Port ID number “1”)
6. TM printer “B” disconnected (Port ID number “2”)
7. TM printer “D” connected (Port ID number “2”) => TMUSB001
(because TMUSB001 has been assigned to the port ID number “2”, regardless of the TM printer)

*As device names are assigned to the port ID numbers, the USB tree structure for connected printers can be located anywhere.

4.4 Port Names

The USB port names used with EPSON TMFLogo Utility will be assigned as follows in accordance with the device names set in the registry.

Registry	Port name (SetupPOS, TMFLogo, etc.)
TMUSB000	=> USB1
TMUSB001	=> USB2
TMUSB002	=> USB3
TMUSB003	=> USB4
...	

TMUSB010 => USB11
TMUSB100 => USB101